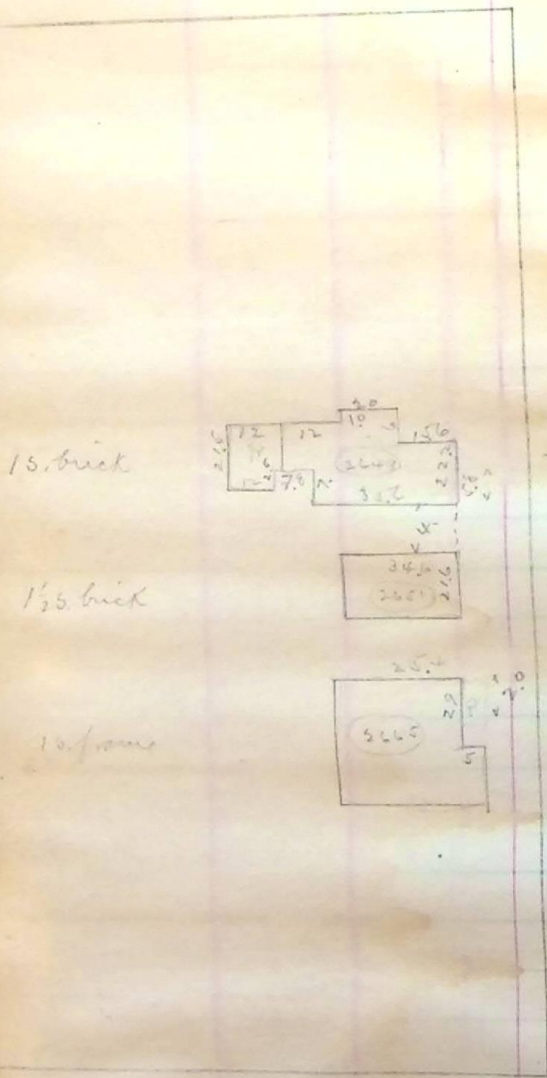


Location of buildings on
Adams Ave - between
27th and 26th Sts Lot 19

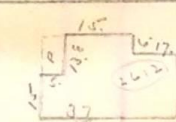
TWENTY-SIXTH



192+363

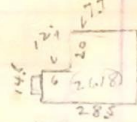
STREET-

83



15 frame

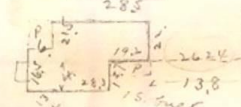
85



15 frame

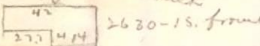
97+50

85



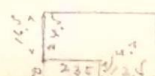
30 15 ft.

78.5



2620-15. frame

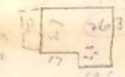
21.0



15. frame

96+60

70.



15 frame. Mac G. Vanlyte on

96+10

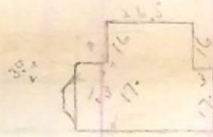
334



15 frame - charity -
will be a landmark
charity
Mrs. Elizabeth
Hickell

95+80

100

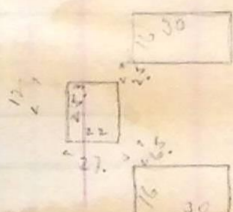


2648

15 frame

95+20

90.



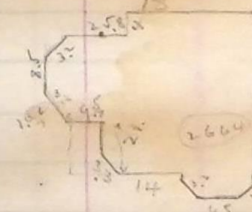
2652

15. frame

Mr. G. Charles on

94+50

654



Mr. G. Charles on
1 1/2 brick